



Minimally Invasive & Bariatric FellowShip Program \_\_\_\_\_

**DR. ALCIDES BRANCO**





About \_\_\_\_\_

## DR. ALCIDES BRANCO

Dr. Alcides Branco has been working with laparoscopic surgery since 1994. From general surgery cases that had been managed laparoscopically to bariatric procedures, his clinic has successfully performed more than 35 thousand laparoscopically surgeries since then.

He is specialized in bariatric and metabolic surgeries, and over the past 27 years, he has operated more than 15 thousand patients.

Since the clinic deals with advanced procedures throughout the year, Dr. Alcides is often invited for national and international congresses to show his live surgery at Portugal, Latin American and Emirates Arabs. It is also very usual for Dr. Alcides to be called for workshops around the world to perform those procedures.



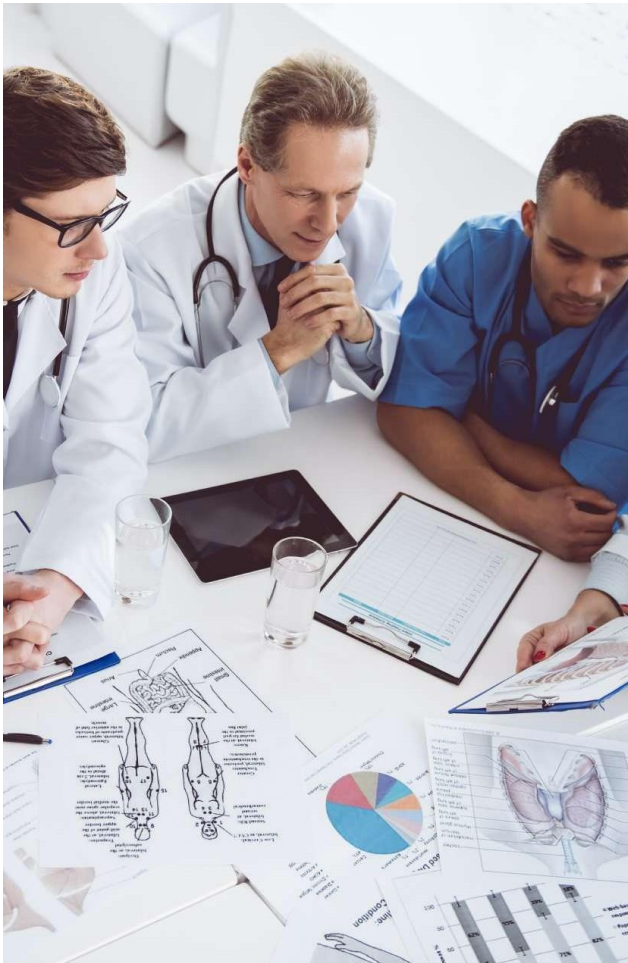


# The FellowShip Program

## OUR VISION

The fellowship primary goal is to make sure the fellow is well prepared for his/her surgical future. And for that reason:

- ◆ The fellow will be engaged in research studies and attend scientific conferences.
- ◆ Keep yourself up to date; you will be part of group discussions and case decisions.
- ◆ Punctuality is paramount; as we have many cases everyday, the fellow should understand the importance of early attendance.
- ◆ The fellow will always be under supervision; during outpatient clinic and hospital care.
- ◆ It is vital that the fellow present exemplary behavior, since ordinary laws may apply.
- ◆ At the end of the fellowship, the fellow will be certified (with exceptions) to exercise minimally invasive and bariatric surgery procedures. Also, the fellow can count on preceptor's supervision on their countries to kick off surgeries, under cetian predetermined conditions.





# Fellowship Program

## OUR CASES

### Metabolic and bariatric surgery

Roux-en-Y gastric bypass (laparoscopic and open)

Sleeve gastrectomy

Duodenal switch, Ileal intersposition with sleeve gastrectomy and sympathectomy (Diabetes Surgery)

Redo procedures: sleeve gastrectomy to RYGB (e.g. intractable reflux)

Gastric band removal

Post scopinaro or maison procedure etc

### Hepatobiliary system

Cholecystectomy (laparoscopic and open)

Exploration of biliary tract (hepatectomies)

Digestive biliary bypass

Possible procedure Splenectomy  
Pancreatectomy Rectovaginal fistula  
Rectovesical fistula Peritoneal pathology

### Gastroenterology surgery

Laparoscopic fundoplication (and redo)

Laparoscopic hiatal hernia repair

Laparoscopic heller's myotomy (achalasia)

Laparoscopic and open gastrectomies  
(benign and malignant cases)

### Colorectal

Colectomies (benign and malignant cases)

Stoma (creation and reversal)

Redo surgeries

Anorectal pathology

### Abdominal wall hernias

Inguinal hernia (laparoscopic and open)

Reoperations of hernias

Abdominal wall hernias (laparoscopic and open)

Reconstruction of the abdominal wall

### Oncology

Esophageal malignancy

Gastric malignancy

Colorectal malignancy

Hepatobiliary and pancreatic malignancy



## Our PROGRAM



- Hospital rounds: you will be required to round on patients with our team and participate in the clinical evaluation part (preoperative and postoperative).
- Outpatient clinic: the fellow should attend Dr. Alcides clinic to observe and play a part in cases management. From preoperative discussion and selection of patients and procedures to postoperative follow up visits, the fellow will surely learn a lot from Dr. Alcides experience.
- On call duties: we strongly encourage our fellows to join our team in the emergency cases as this will have a great impact on his/her clinical ability in that particular aspect.



## Our \_\_\_\_\_ PROGRAM



- ◆ Operative part: the fellow will scrub in our surgeries as an assistant. If he/she shows improvement within a few months, he/she will start to perform those surgeries (under supervision).
- ◆ Gastroenterology: the fellow will work alongside endoscopists while they perform diagnostic and therapeutic endoscopic and colonoscopic procedures. Some of these will include advanced endoscopic treatment such as endoscopic mucosal resection (EMR), endoscopic submucosal dissection (ESD) and endoscopic retrograde cholangiopancreatogram (ERCP).
- ◆ Surgical courses: Brazil is known to have many advanced surgical and endoscopic surgery courses. We suggest the fellow has a look on their websites and select the best courses to attend.



# Program SCHEDULE



Monday	Morning	Surgery
	Noon	Hospital Round
	Afternoon	Surgery
Tuesday	Morning	Surgery
	Noon	Gastroenterology
	Afternoon	Gastroenterology
Wednesday	Morning	Surgery
	Noon	Gastroenterology
	Afternoon	Clinic
Thursday	Morning	Surgery
	Noon	Gastroenterology
	Afternoon	Clinic
Friday	Morning	Surgery
	Noon	Surgery
	Afternoon	Hospital Round
Saturday	Morning	Surgery
	Noon	-
	Afternoon	-
Tuesday & Thursdays	Afternoon	Lectures



Our Team

# GROUP OF PRECEPTORS

- Dr Alcides José Branco Filho  
Surgeon
- Luis Gustavo Cortiano  
Surgeon
- André Weiss  
Surgeon
- Francisco E. Almeida  
Surgeon
- André Nassif  
Surgeon
- Sergio Nassif  
Surgeon
- Lucas Nassif  
Surgeon
- Claudia Branco  
Cardiologist
- Rafael Noda  
Endoscopist
- João Antônio Schemberck  
Endoscopist
- Guilherme  
Endoscopist
- Humberto Vieira  
Endocrine
- Magda Rosa Ramos  
Nutritionist
- Alexandre Leal Laux  
Psychiatrist
- Adriane Branco  
Psychologist
- Lia  
Instrumentator
- Regiane  
Secretary
- Quézia  
Secretary
- Liz  
Nurse



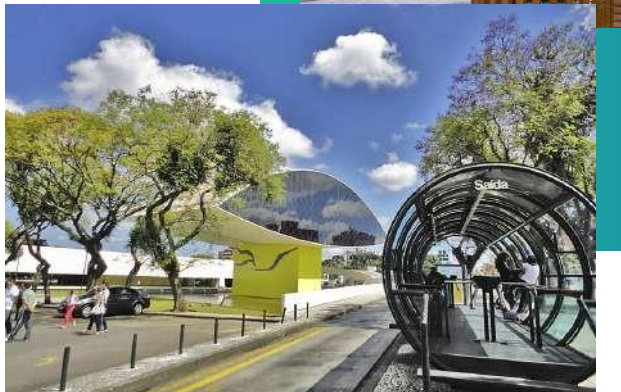
## Program        HOSPITALS & CLINICS

- ♦ Marcelino Champagnat Hospital
- ♦ Cruz Vermelha Hospital
- ♦ Santa Casa de Misericórdia Hospital Nossa
- ♦ Senhora das Graças Hospital (Endoscopy)



## About the city \_\_\_\_\_ CURITIBA - PR

- ◆ Curitiba is the capital and largest city in the Brazilian state of Paraná. The city population was 1,879,355 as of 2015, making it the eighth most populous city in Brazil.
- ◆ Language: the official language used in the city (and the hospital) is the Brazilian Portuguese.
- ◆ Weather: Curitiba has a very nice climate compared to the rest of Brazil, with mildly humid to cold weather most of the year.
- ◆ Currency: the Brazilian currency is the real (pronounced he-ice!). It equals to 0.26 United States Dollar.
- ◆ Airport: Afonso Pena .If your country doesn't have a direct flight then you need to use another internal airport to get here (e.g. São Paulo airport - Guarulhos (GRU))





Dr. Alcides Branco

**CONTACT**

**Dr. Alcides Branco**

+55 (41) 3242-6543

ajbranco@terra.com.br

Av. Vicente Machado, 2855

Seminário - Curitiba PR

Cep: 80440-020



Final \_\_\_\_\_

# RECOMMENDATIONS



- Visa: You should get a student or professional training visa from Brazil embassy in your country, valid for one year. This might take some time so we suggest you apply in advance.
- Migration Registration: When you arrive in Curitiba, you should register your visa within 90 days of your arrival in the Federal Police. Further instructions will be explained to you upon your arrival.
- CPF: The Cadastro de Pessoas Físicas (CPF; Portuguese for “Natural Person Register”) is the Brazilian taxpayer registry identification, a number attributed by the Brazilian Federal Revenue to both Brazilian and non-Brazilian residents. It’s important to get a CPF number to rent an apartment and for many purchases (esp. large amount of products).



## + Final \_\_\_\_\_ RECOMMENDATIONS

- ◆ Accomodation: We strongly encourage fellow and residents to be settled in hotels around Batel neighbourhood. This would make transportation and logistics much easier.
- ◆ Transportation: It's best to use uber. It's safe, cheap and quick.
- ◆ Health insurance: fellows must have health insurance for personal coverage.
- ◆ Fellowship tuition: the program of one year will cost the fellow XXX\$

\*The fellow can get assistance with getting his migration registration and CPF card at a fee of 200\$ that will be added to the fellowship tuition.



Minimally Invasive & Bariatric FellowShip Program

**DR. ALCIDES BRANCO**

